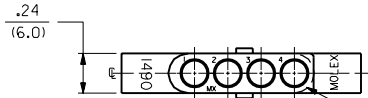


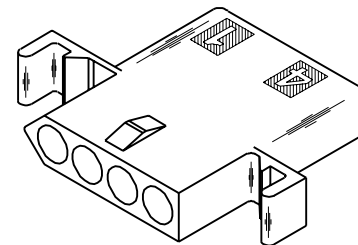
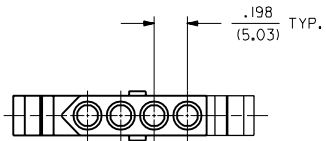
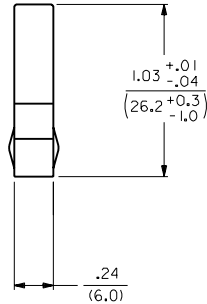
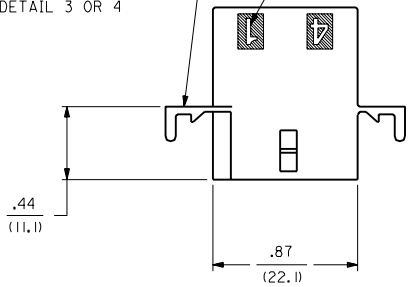
RECEPTACLE



ALTERNATE CONFIGURATION

OPTIONAL MOUNTING EAR (2 PL.)
(STD. MOUNTING EAR SHOWN)
SEE DETAIL 3 OR 4

CIRCUIT I.D.



RECEPTACLE HOUSING

| LTR. | REVISIONS | LTR. | REVISIONS |
|------|-----------|------|-----------|
| | | | |
| | | | |
| | | | |
| | | | |
| | | | |
| | | | |
| | | | |
| | | | |
| | | | |

| | |
|--|--------------|
| DIMENSIONS SHOWN (METRIC) INCH | |
| UNLESS OTHERWISE SPECIFIED TOLERANCES: ANGULAR ± .004 TO | |
| INCH | METRIC |
| 3 PLACE ± .010 | --- |
| 2 PLACE ± .014 | ± 0.25 |
| 1 PLACE --- | ± 0.35 |
| DRAFT WHERE APPLICABLE MUST REMAIN WITHIN DIMENSIONS | |
| DRW. BY: CEP | CHKD. BY: RW |
| APP'D. BY: RAS | SCALE: 2 : 1 |

| | |
|--|---------------------|
| REVISIONS ONLY ON CAD SYSTEM | |
| TITLE: .093/(2.36) HOUSING, PLUG AND RECEPTACLE, 4 CKT. ± .198/(5.03) CTRS. | |
| MOLEX INCORPORATED | SHEET NO. 2 |
| LITLLE, ILL. 60532 U.S.A. | DATE 3/10/88 |
| PART NO. SEE CHART | DRWG. NO. SD-1490-* |
| FILE NAME: SD1490X2.DWG | DIV. CP |
| THIS DRAWING CONTAINS INFORMATION THAT IS PROPRIETARY TO MOLEX INC. AND SHOULD NOT BE USED WITHOUT WRITTEN PERMISSION. | |

1490

CP C

| PLUG | |
|-------------|-----------|
| PART NO. | ENG. NO. |
| 03-09-2041 | I490-P |
| 03-09-2042 | I490-PI |
| 03-09-7041 | I490-PBK |
| 03-09-7042 | I490-PIBK |
| PRELIMINARY | I490-P2 |
| 03-09-3042 | I490-PIBU |

| RECEPTACLE | |
|------------|-----------|
| PART NO. | ENG. NO. |
| 03-09-1041 | I490-R |
| 03-09-1042 | I490-R1 |
| 03-09-6041 | I490-RBK |
| 03-09-6042 | I490-RIBK |
| 03-09-1043 | I490-R2 |
| 03-09-6043 | I490-RBU |
| 03-09-6045 | I490-RGN |

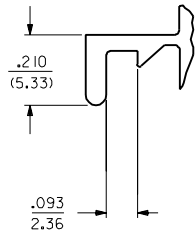
LEGEND:

I490-***-*

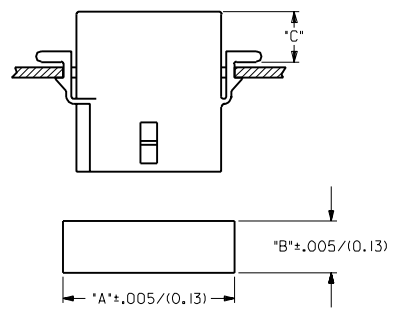
P = PLUG
R = RECEPTACLE

BLANK = WITH STANDARD EARS
1 = WITHOUT EARS
2 = WITH PREBENT EARS, PER DETAIL 4

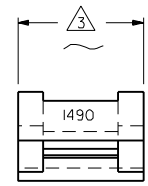
COLOR: BLANK=NATURAL COLOR
AM=AMBER BK=BLACK BU=BLUE
BN=BROWN CY=GRAY GN=GREEN
OR=ORANGE RD=RED YW=YELLOW
BLANK = MATERIAL CODE A



DETAIL 3
.093/(2.36) STANDARD MOUNTING EAR
(SCALE 4:1)



| HOUSING | DIM. "A" | DIM. "B" | DIM. "C" |
|------------|---------------|-------------|-----------|
| PLUG | 1.131/(28.73) | .375/(9.52) | .36/(9.1) |
| RECEPTACLE | 1.038/(26.36) | .312/(7.92) | .37/(9.4) |



DETAIL 4
.093/(2.36) PREBENT MOUNTING EAR
(SCALE 4:1)

NOTES:

- MATERIAL CODES:
A = NYLON 6/6, 94V-2
- THIS PART COMPLIES WITH MOLEX PRODUCT SPEC. 02-09.
- FOR DIMENSION SEE SHEET 1 AND 2.
- CIRCUIT I.D. NUMBERS ON HOUSING APPEAR ON PARTS FROM TOOLS BUILT AFTER 8/7/91.

| | | | | | | | |
|--|--------|---|-------|---|--|---------------------------|---------|
| DIMENSIONS SHOWN METRIC (INCH) | | UNLESS OTHERWISE SPECIFIED TOLERANCES ANGULAR ± .04° TO | | ▽ = 0 ▼ = 0 | | REVISE ONLY ON CAD SYSTEM | |
| INCH | | METRIC | | TITLE | | PART NO. | |
| 3 PLACE | ± .010 | --- | --- | .093/(2.36) HOUSINGS, PLUG AND RECEPTACLE, 4 CKT. ± .198/(5.03) CTRS. | | SHEET NO. | DATE |
| 2 PLACE | ± .014 | ± 0.25 | --- | MOLEX INCORPORATED | | 3 | 3/10/88 |
| 1 PLACE | --- | ± 0.35 | --- | LITSE,ILL. 60532 U.S.A. | | | |
| DRAFT WHERE APPLICABLE MUST REMAIN WITHIN DIMENSIONS | | | | DRAWING NO. | | SD-I490-* | |
| DRW. BY | CEP | CHKD. BY | RW | SEE CHART | | | |
| APP'D. BY | RAS | SCALE | 2 : 1 | FILE NAME | | DIV. SIZE | |
| LTR. REVISIONS | | LTR. REVISIONS | | SD I490X3 D20 | | CP C | |